

BALDUR

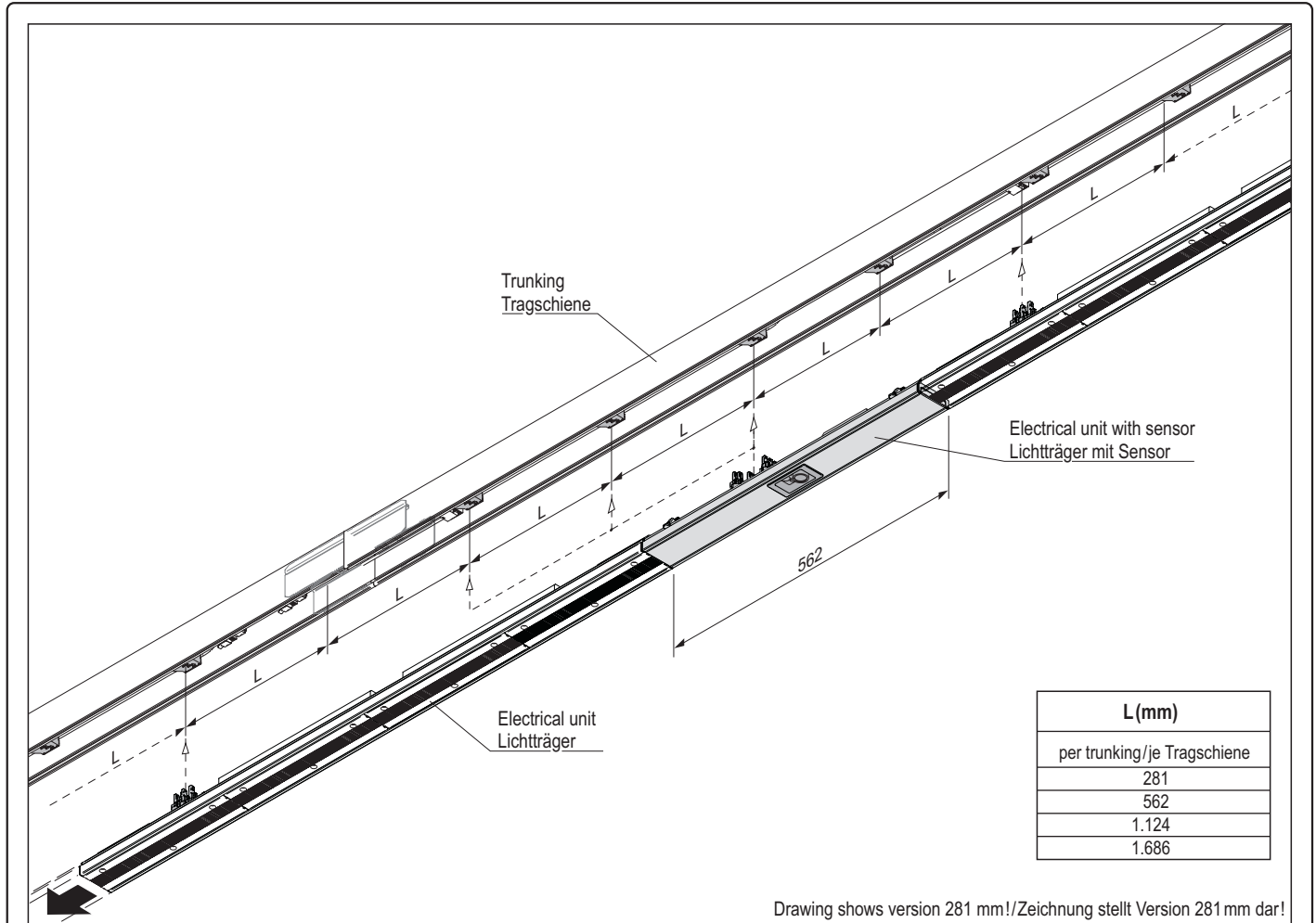
Daylight + Presence Control

Tageslicht + Präsenzregelung

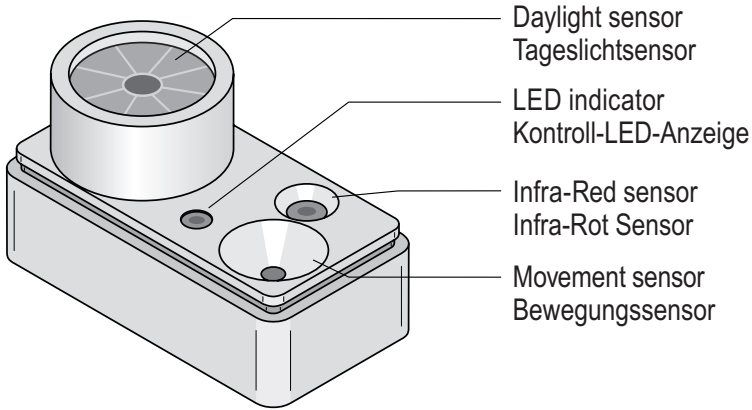
Philips - ActiLume



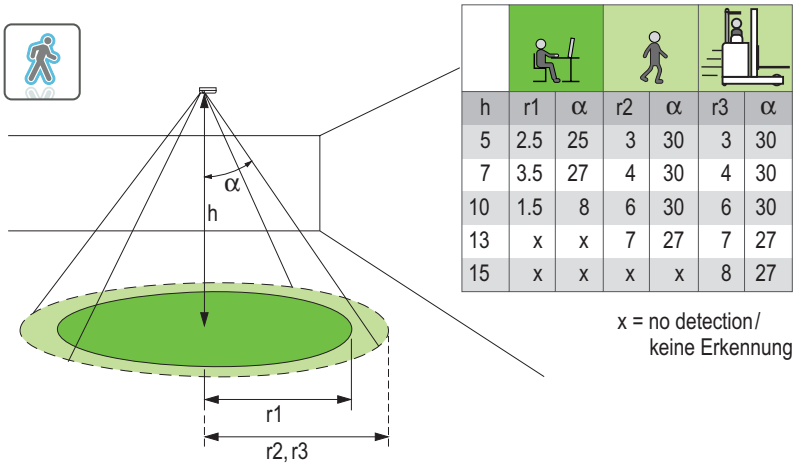
Installation Instructions · Montageanleitung · Notice de montage · indicaciones de montaje · Istruzioni per l'installazione · Installatie-instructies



Nordeon GmbH
Rathenaustraße 2-6
D-31832 Springe
Germany
Phone +49 (0) 5041 75 0
www.nordeon.com

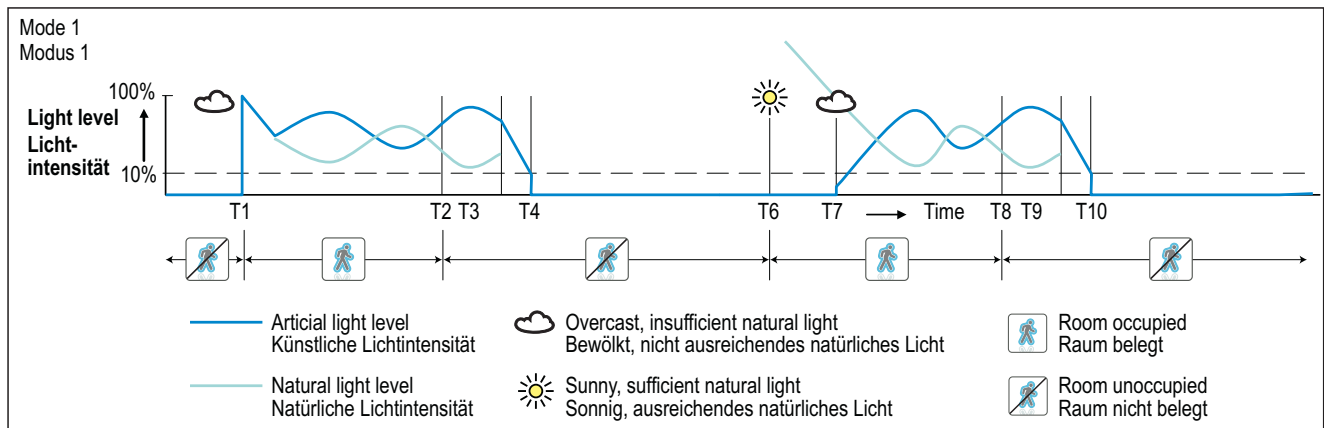


Detection pattern diagram/ Erfassungsbereich



Mode 1 Modus 1

For cell Office applications ActiLume DALI Gen 2 has 3 dedicated Modes. From these Modes, Mode 1 is the basic and most applied mode. Mode 1 is the default mode in which the ActiLume DALI Gen 2 is supplied. The functioning of Mode 1 is described in the graph below.



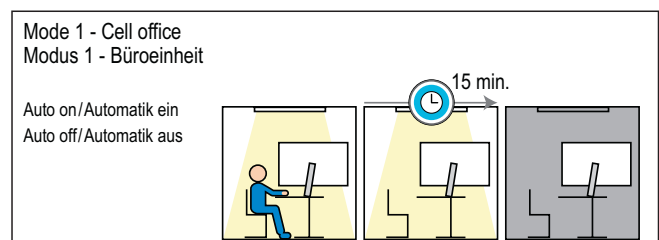
Before T1 no one is in the office, so the lights are off. At T1 someone enters the office, the artificial light will go to 100% and then immediately start DDR (Daylight Depending Regulation) to regulate according to the amount of natural daylight coming through the windows. At T2 the person is leaving the cell office and the hold time starts. During the grace time of 10 seconds (from T3 to T4) the lights will be dimmed down to their minimum level and at T4 the lights will be switched off. At T6 the person comes back into the office but the lights will stay off because the sun is shining and the light level is sufficient. This is called a DDO (Daylight Depending Override). At T7 it becomes cloudy again. The natural light level drops so the artificial light turns on automatically to compensate the lack of light. At T8 the person is leaving the office again. The light level continues to be regulated for another 15 minutes and at T9 it starts fading down again. Finally the lights will be switched off at T10.

If, during the grace time (T3 to T4 or T9 to T10) movement is detected, the hold time will be extended by 10 minutes. This will be done once only.

Mode 1 is designed for a classic luminaire arrangement. The master luminaire is implemented at the window side. In Window/Corridor configuration, the luminaires alongside the windows are connected to the Window connection of the controller and the others are connected to the Corridor side. The corridor side will follow the window side with an offset.

For cell offices designed around the indoor lighting norm EN12464, or when using direct/indirect lighting, Mode 5 is advised. See chapter 4.5, "Mode 5 - Open plan Task / Workspace (& Decorative)".

When in Parallel Linking or BMS configuration, all luminaires are to be connected to the Window connection and commissioning of the luminaires is needed as described in chapter 6.10, "Grouping of ballasts / drivers". When using the ActiLume DALI Gen 2 in Parallel Linking or BMS configuration, there is also a possibility of having a third group of luminaires intended for decorative lighting.



ActiLume DALI 2nd Generation User Manual Anwender Handbuch

Following these Link you will find the User Manual for the Philips Sensor DPC - ACL and the driver Philips Controler LLC 1663/00

Auf diesem Pfad finden Sie das Anwender Handbuch für den Philips Sensor DPC - ACL und dem Steuergerät Philips Controler LLC 1663/00



<http://www.lighting.philips.com/main/products/controls/philips-multione-configurator.wpd>

Subject to change without notice!/Technische Änderungen vorbehalten!

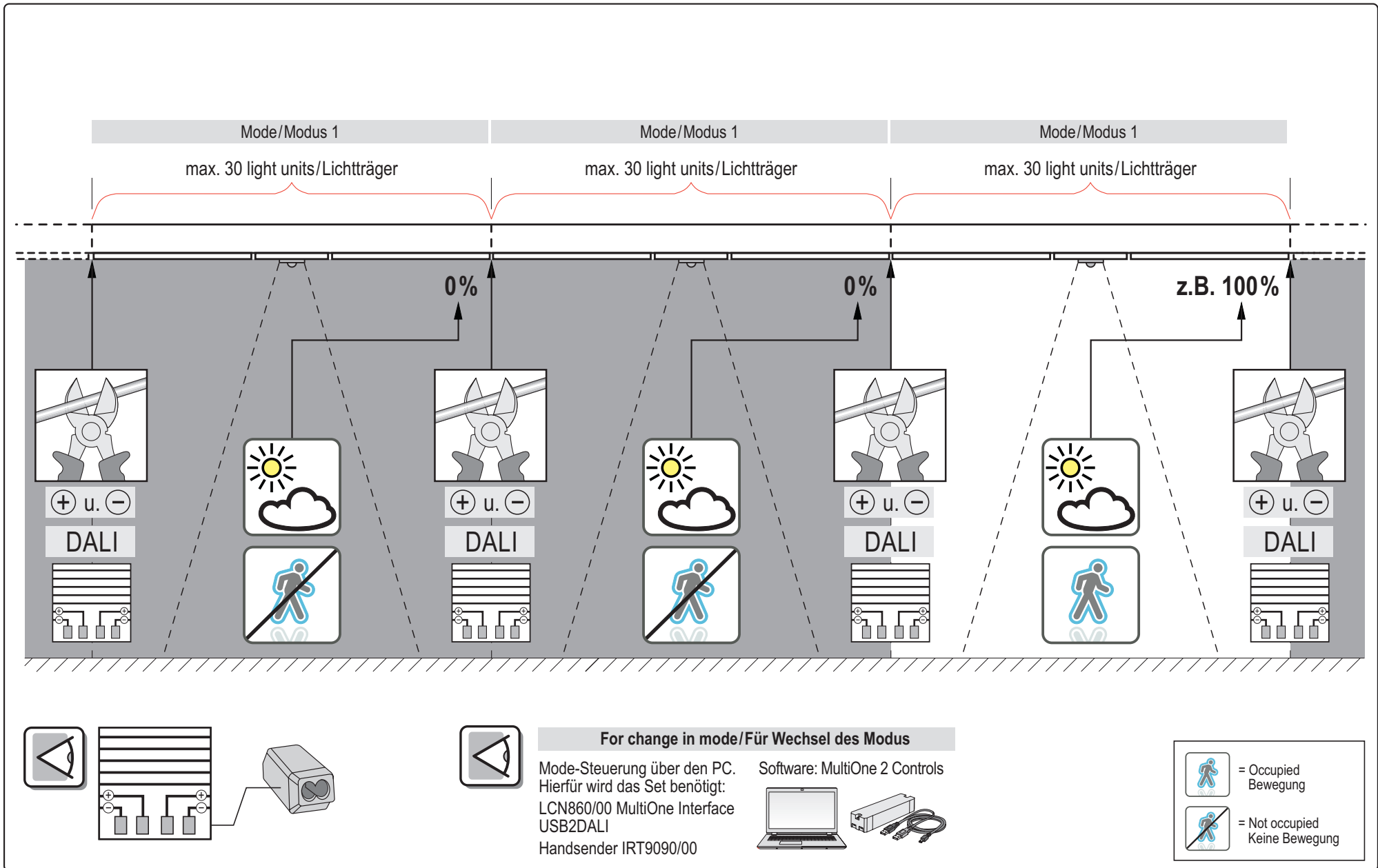
ActiLume has 15 pre-programmed application Modes in which a group of luminaires can be controlled according to the Table below.

Mode	Description
Mode 1	Cell Office Window / Corridor (& Decorative)
Mode 2	Open plan Window / (Middle /) Corridor
Mode 3	School/Classroom (& Decorative)
Mode 4	Cell Office Task / Workspace (& Decorative)
Mode 5	Open plan Task / Workspace (& Decorative)
Mode 6	Corridor / staircase
Mode 7	Toilet
Mode 8	Meeting Room (& Decorative)
Mode 9	Open plan Task / (middle /) Workspace & mains switching
Mode 10	Free floor standing luminaire
Mode 11	Adjacent Cell Office Window / Corridor (& Decorative)
Mode 12	Free for OEM (copy of Mode 2)
Mode 13	Free for OEM (copy of Mode 8)
Mode 14	Free for OEM (copy of Mode 8)
Mode 15	Free for OEM (copy of Mode 11)
Mode 16	Free for OEM (only available via MultiOne2Controls)

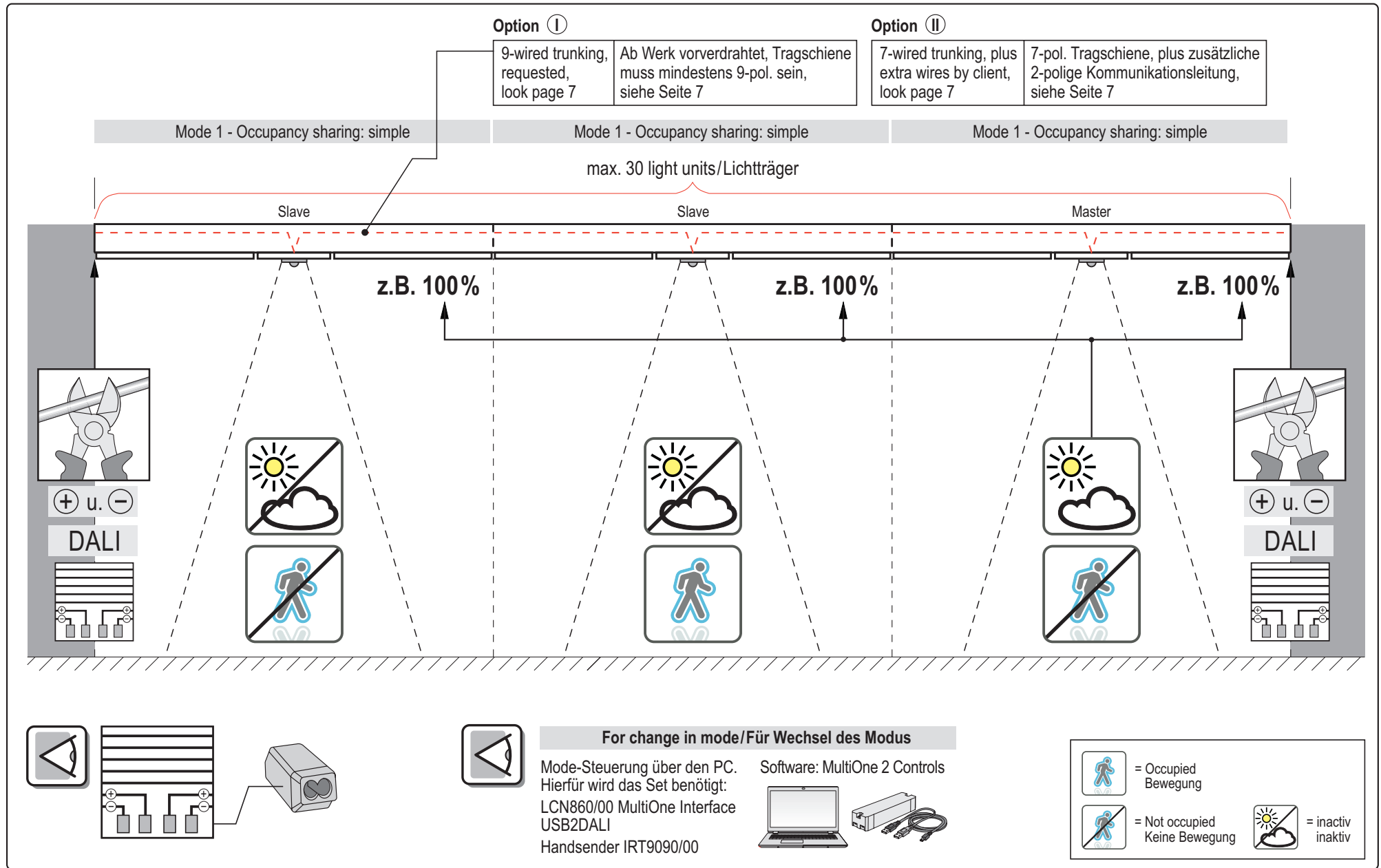
Table 2

This chapter explains for which application which Mode is best suited or which lighting design requires which Mode.

Vers. 1: BALDUR – Daylight + Presence Control/Tageslicht + Präsenzregelung – Stand-alone

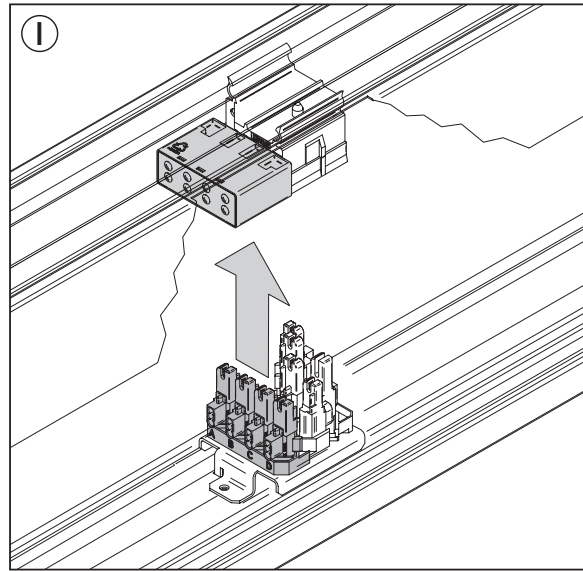


Vers. 2: BALDUR – Daylight + Presence Control/Tageslicht + Präsenzregelung – Master / pres. sensor slave



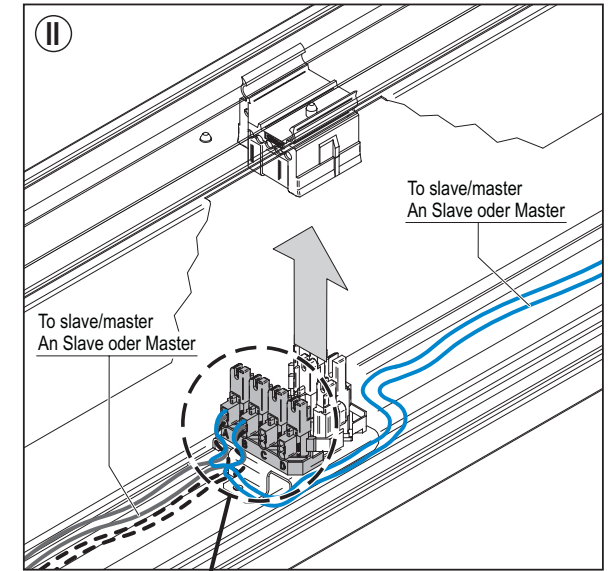
for/für Vers. 2: BALDUR – Daylight + Presence Control/Tageslicht + Präsenzregelung – Master / pres. sensor slave

Optional

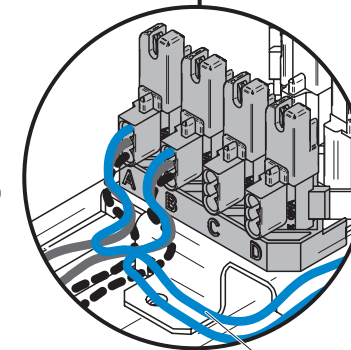


9-wired trunking/9-pol. Tragschiene

or/oder



7-wired trunking/7-pol. Tragschiene



Cable/Kabel 0,5- 1,0 mm²

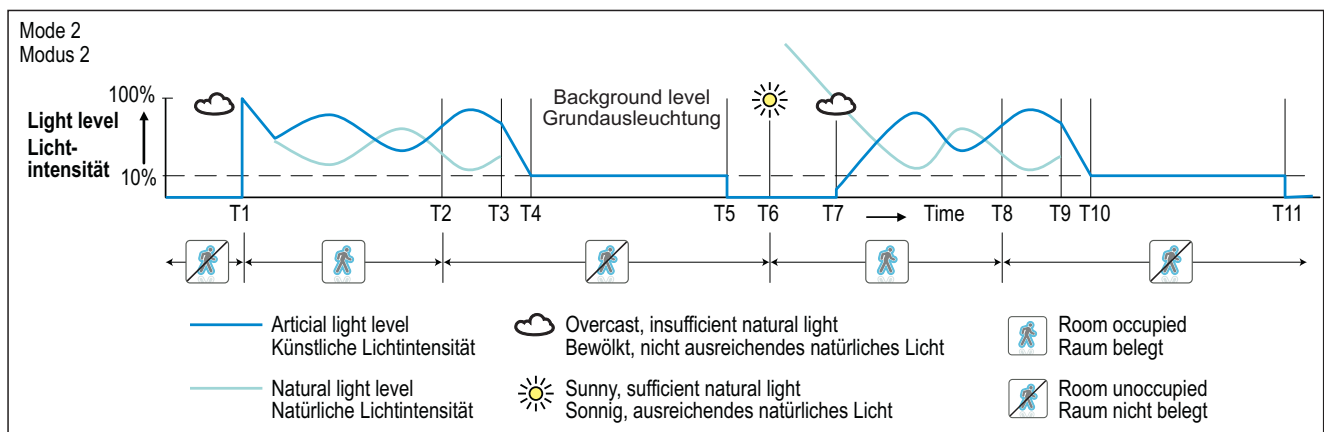
Caution: Polarity!
Achtung: Polarität beachten!

Mode 2 Modus 2

Mode 2 functions in principle in the same way as Mode 1 but with the difference that in Mode 2, the lights do not turn off after the hold time (15 minutes) but are set to a background light level. This is to avoid that in parts of an open plan office where no one is present people are not looking into a completely dark area.

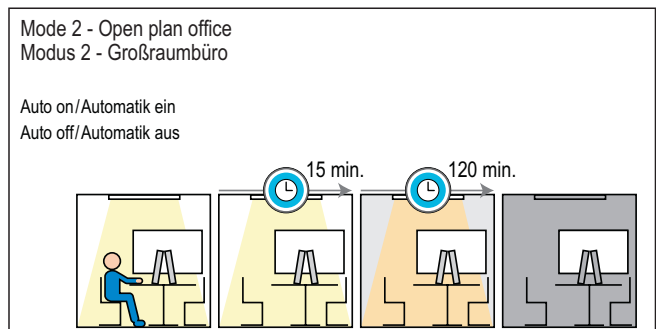
Background level

15 minutes after the last movement has been detected (T3), the lights will fade down to 20% during Grace time (T3 to T4). This light level (background level) will be maintained for 120 minutes (T4 to T5) before the lights will be turned off. If needed, the background level can be altered to 1%, 10%, 20%, 30%, 40%, or 50%. This is described in chapter 6.3, "Setting the background level".

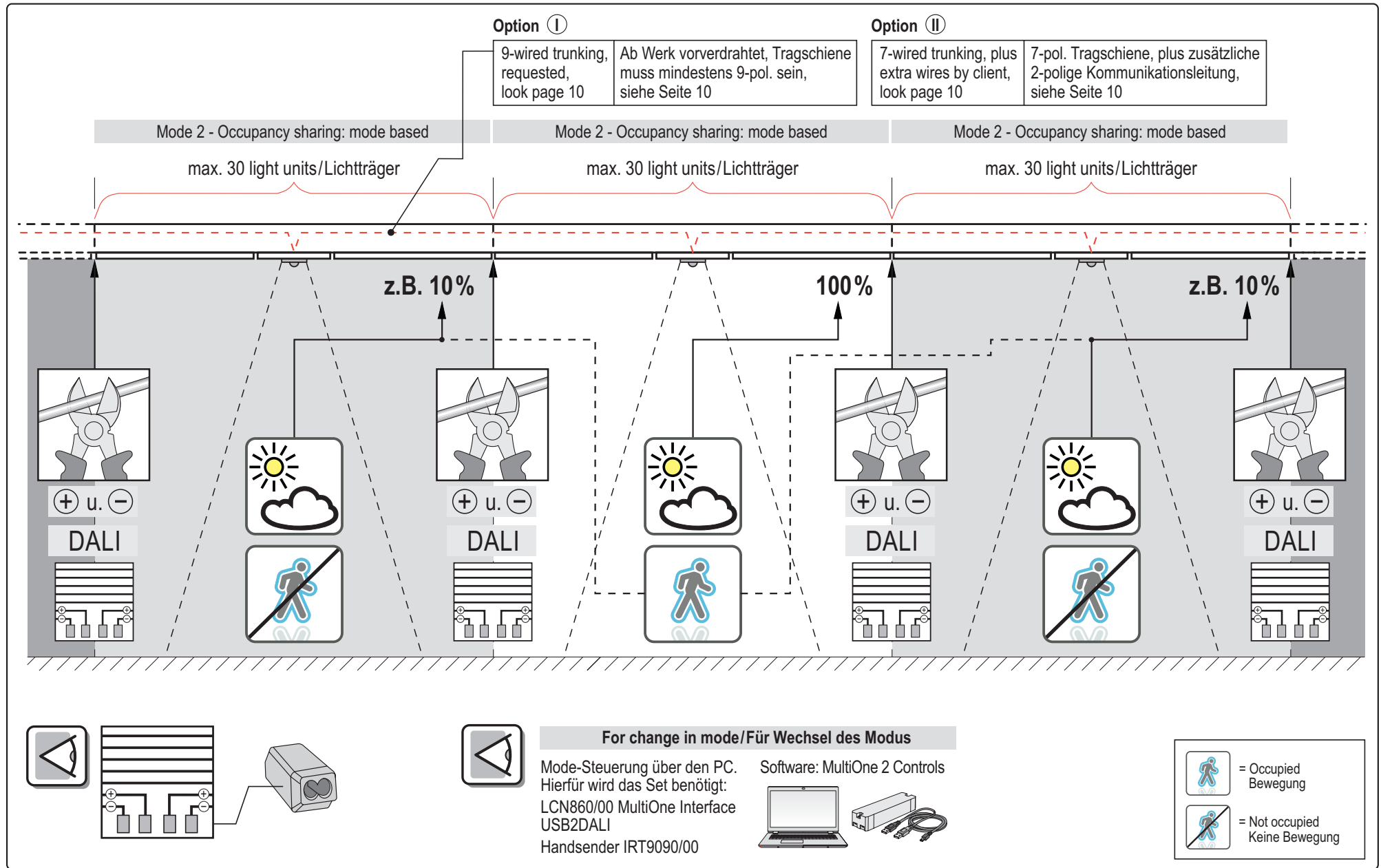


In Window/Corridor configuration, the luminaires alongside the windows are connected to the Window connection of the controller and the others are connected to the Corridor side. The corridor side will follow the window side with an offset. For open plan offices designed around the indoor lighting norm EN12464, or when using direct/indirect lighting Mode 5 is advised. See chapter 4.5, "Mode 5 - Open plan Task / Workspace (& Decorative)".

When in Parallel Linking or BMS configuration, all luminaires are to be connected to the Window connection and commissioning of the luminaires is needed as described in chapter 6.10, "Grouping of ballasts/drivers". When using the ActiLume DALI Gen 2 in Parallel Linking or BMS configuration, there is also a possibility of having a third group of luminaires intended for a middle row (row between window and corridor row) lighting.

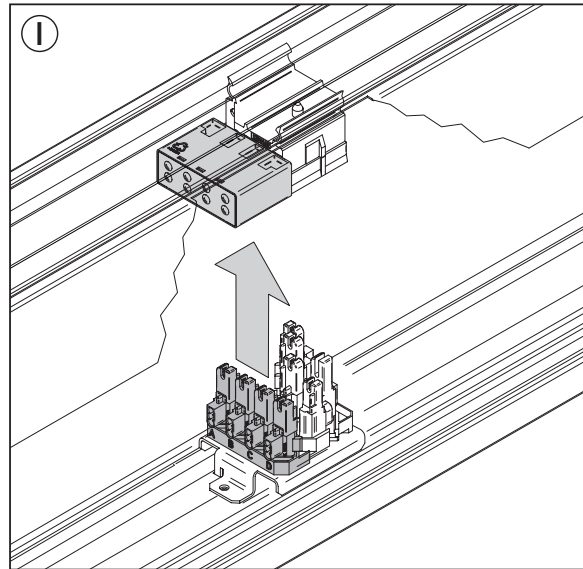


Vers. 3: BALDUR – Daylight + Presence Control/Tageslicht + Präsenzregelung – Multimaster



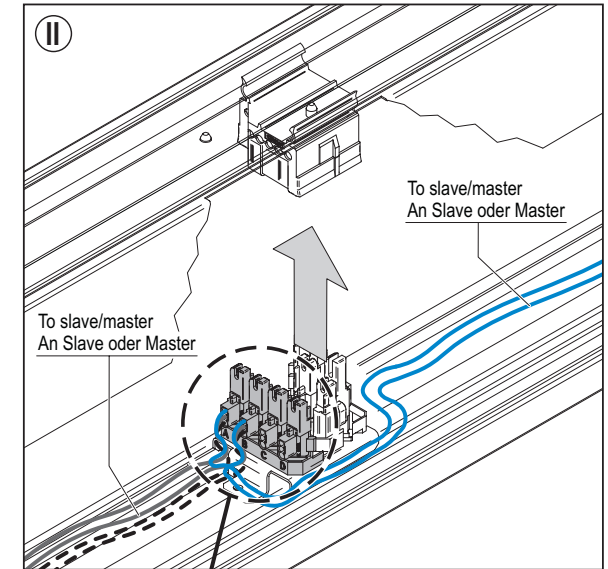
for/für Vers. 3: BALDUR – Daylight + Presence Control/Tageslicht + Präsenzregelung – Multimaster

Optional

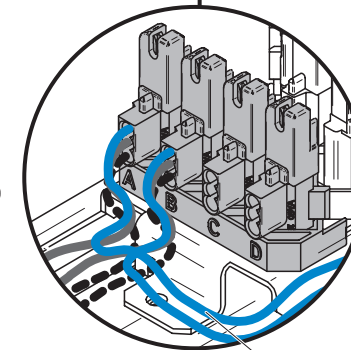


9-wired trunking/9-pol. Tragschiene

or/oder



7-wired trunking/7-pol. Tragschiene



Cable/Kabel 0,5- 1,0 mm²

Caution: Polarity!
Achtung: Polarität beachten!